

# Welcome to Texas Connection Consortium (TCC) Who, What, When

May 25, 2022

## Presenters

Brian Braden

Angelo State University

Gail Wallin

Texas A&M University - Central Texas

Taylor Stephenson

Lamar University

# Agenda

- 1** A Brief History of Why TCC was Formed
- 2** The TCC Organization
- 3** The Operations
- 4** Current and Future Activities
- 5** Stay Informed and Get Involved
- 6** Open Discussion



# Why was TCC Formed? A Brief History

# The Past – A Brief History

## Let's Begin...

The TCC has a lot of moving parts...  
And a lot of acronyms/terms...

Member Reps

E-communities

State Legislation

Board

TCC Mods

Voting

Product  
Coordinators

TCC Liaison

Ellucian

Texas A&M Corpus  
Christi

RTE ... a.k.a. TCC Mods

Leadership Council

Shared Service Center  
(a.k.a. TCC Center)

Contracts

Consortium Members

2 Year Schools

TCC Website

4 Year Schools

# Why was TCC formed?

In the Beginning...

Institutions

...Saw a Need for A Better Way of Handling...

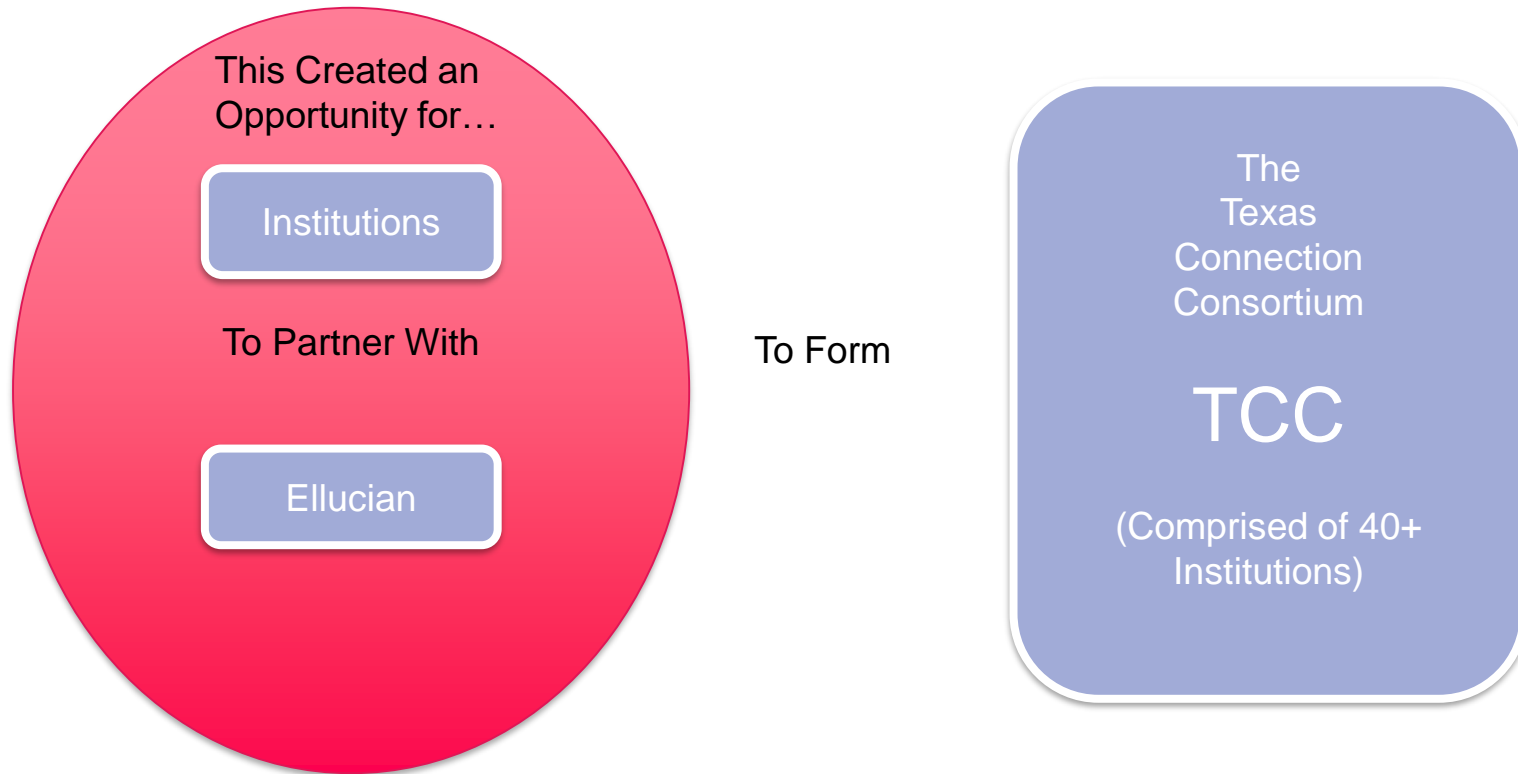
State Reporting &  
Compliance

Savings on Software  
and Maintenance Costs

Texas Specific Needs

Sharing of Best  
Practices

# Why was TCC formed?



# Why was TCC formed?



## Partnership

- Between Ellucian and Texas Public Institutions
- Master agreement since 1995
- Renewed through 2027
- Texas specific solutions



## Value

- Shared Resources for State Required Modifications
- Significant discounts on license, maintenance, & services
- Annual escalation costs are controlled

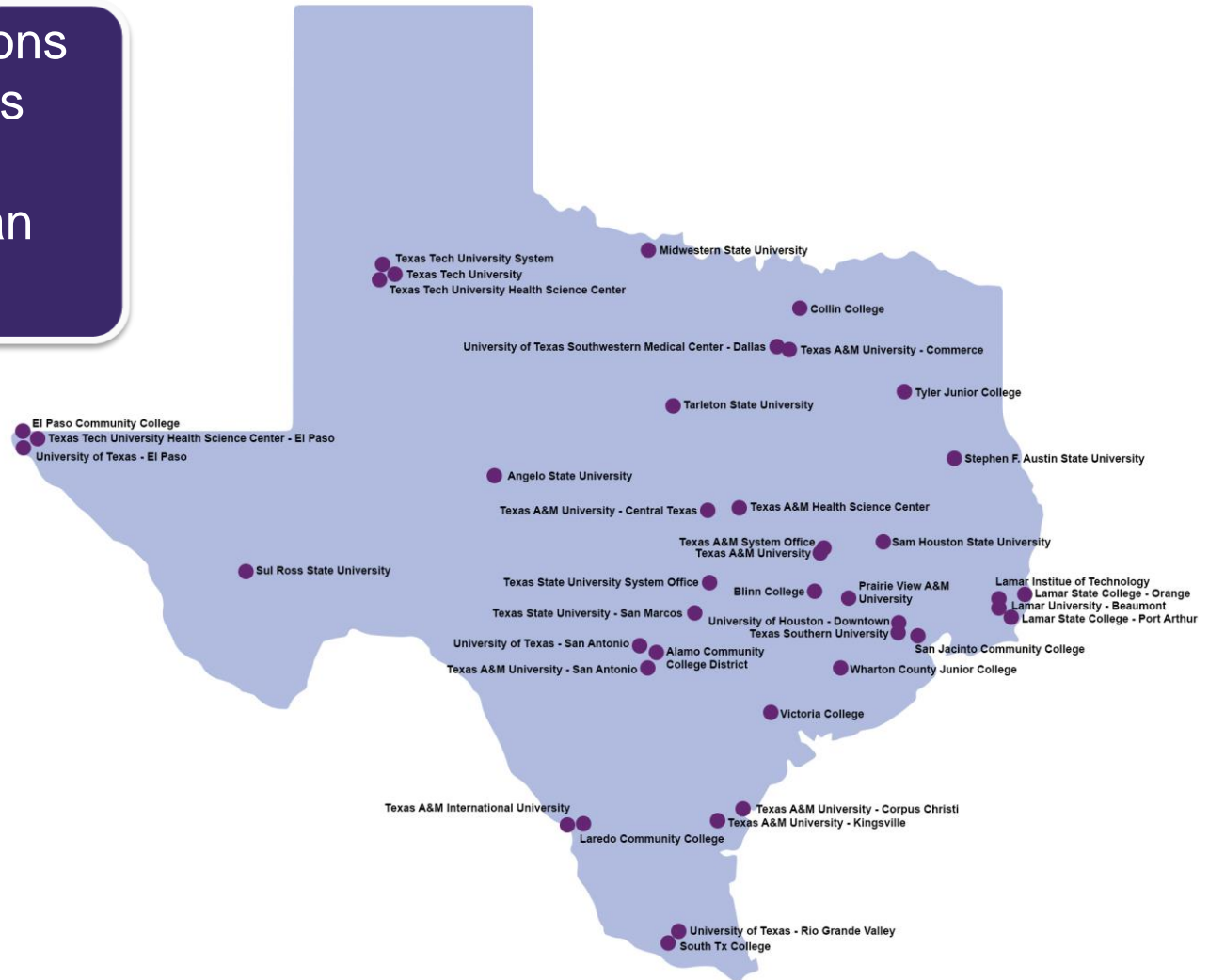


## Support

- Fully dedicated team members
- Complete software systems lifecycle support
- Direct collaboration with clients

# Who are the current members?

Over forty institutions  
throughout Texas  
using Banner  
and other Ellucian  
products

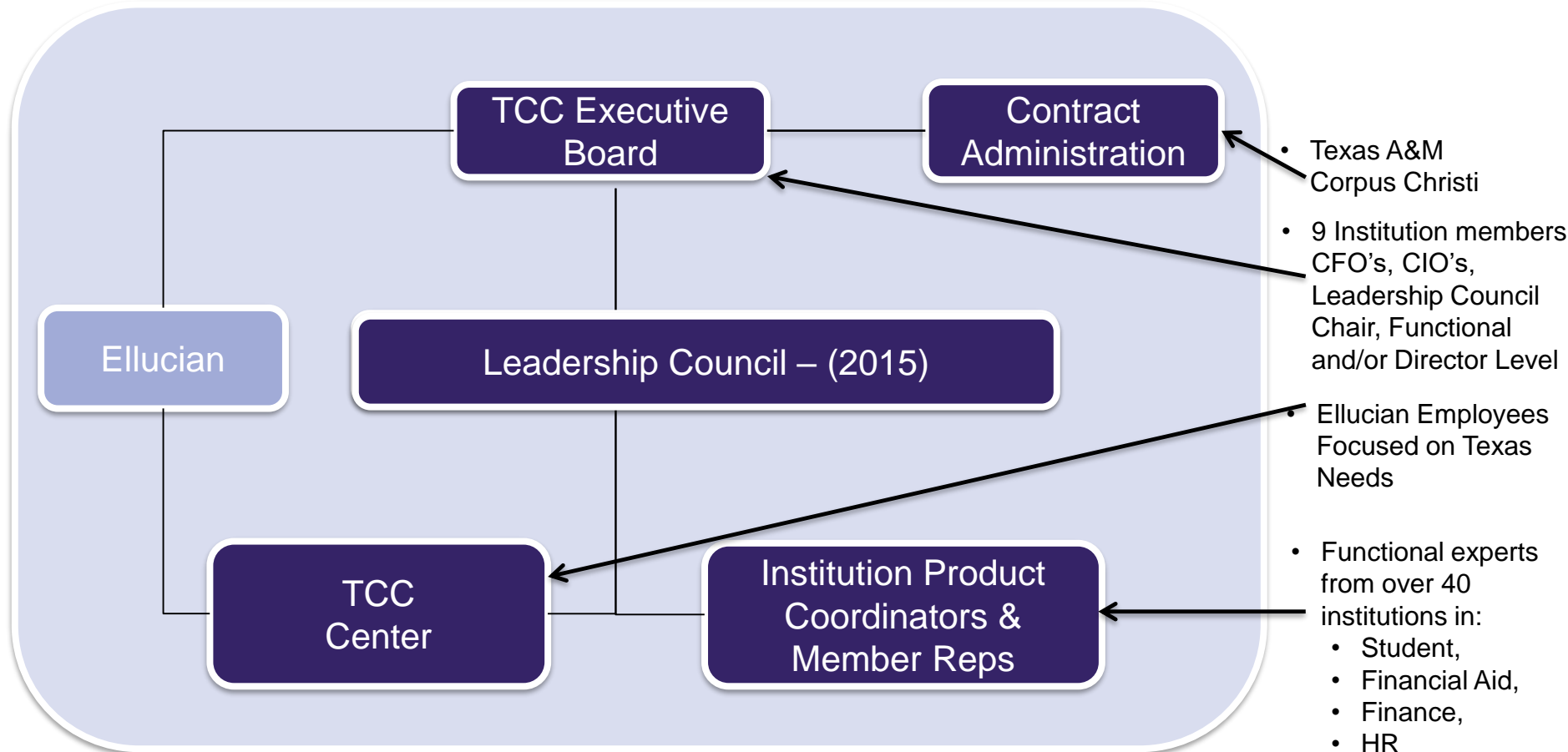




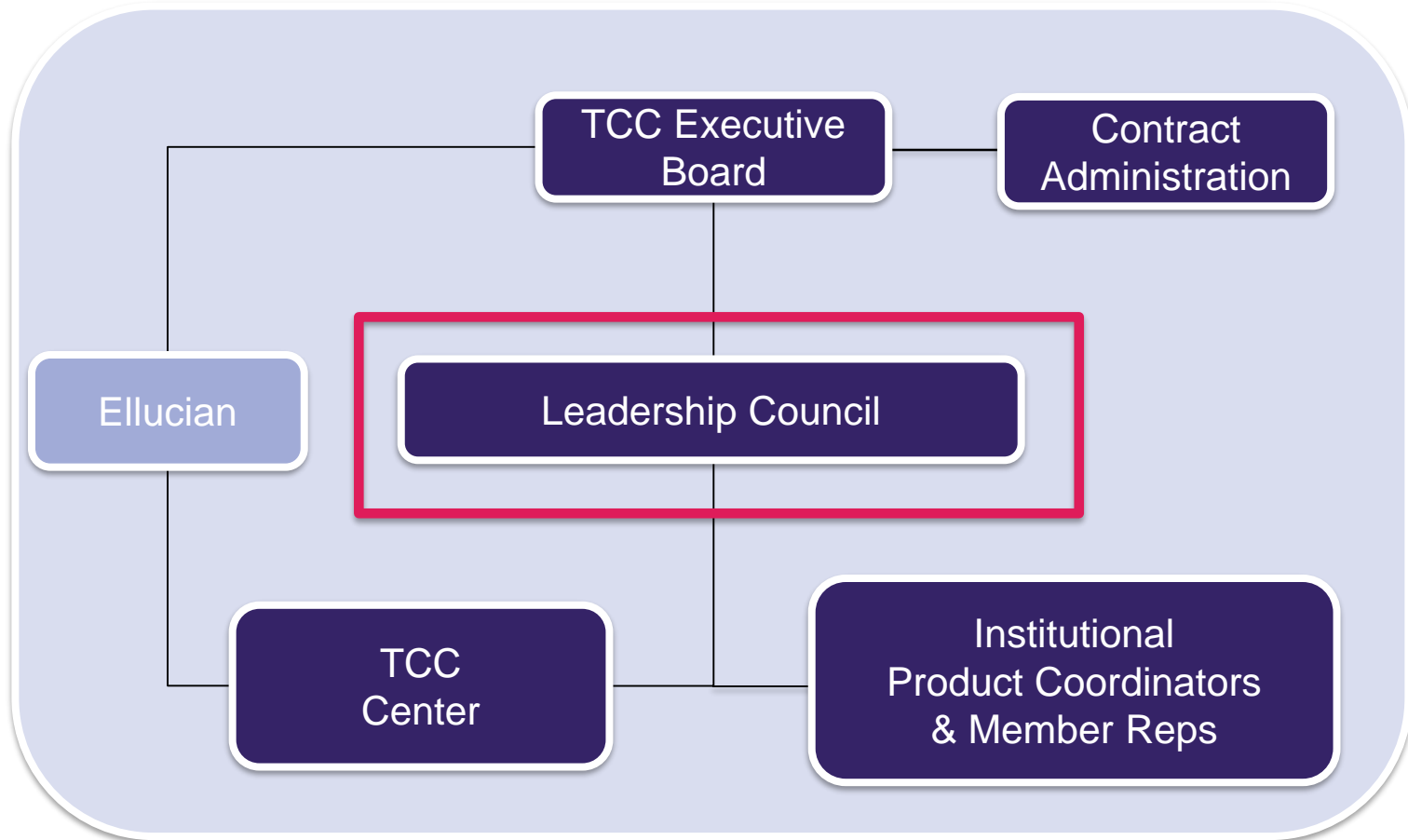


# The TCC Organization

# The TCC Organization



# TCC Organization – Leadership Council



# TCC Organization – Leadership Council

## What is the Leadership Council?

- The TCC Leadership Council's mission is to facilitate collaboration, communication, dialogue, and direction for the TCC and participating schools that will result in improved strategic planning and decision-making.
- Serve as the primary communication channel between TCC and their institution for consortium level planning, prioritization, and decisions.

## Who Are The Members of The Leadership Council?

- The TCC Leadership Council representatives are typically (but not always) the IT leadership roles over the Banner systems at each institution.
- There is a primary and proxy member from each institution.
- The Leadership Council works with the TCC Board, TCC Center, and the Institution Product Coordinators.

# TCC Organization – Leadership Council

## Who Are The Leadership Council Officers?



Taylor Stephenson  
Chair  
Lamar University



Brian Jackson  
Vice Chair  
Angelo State University

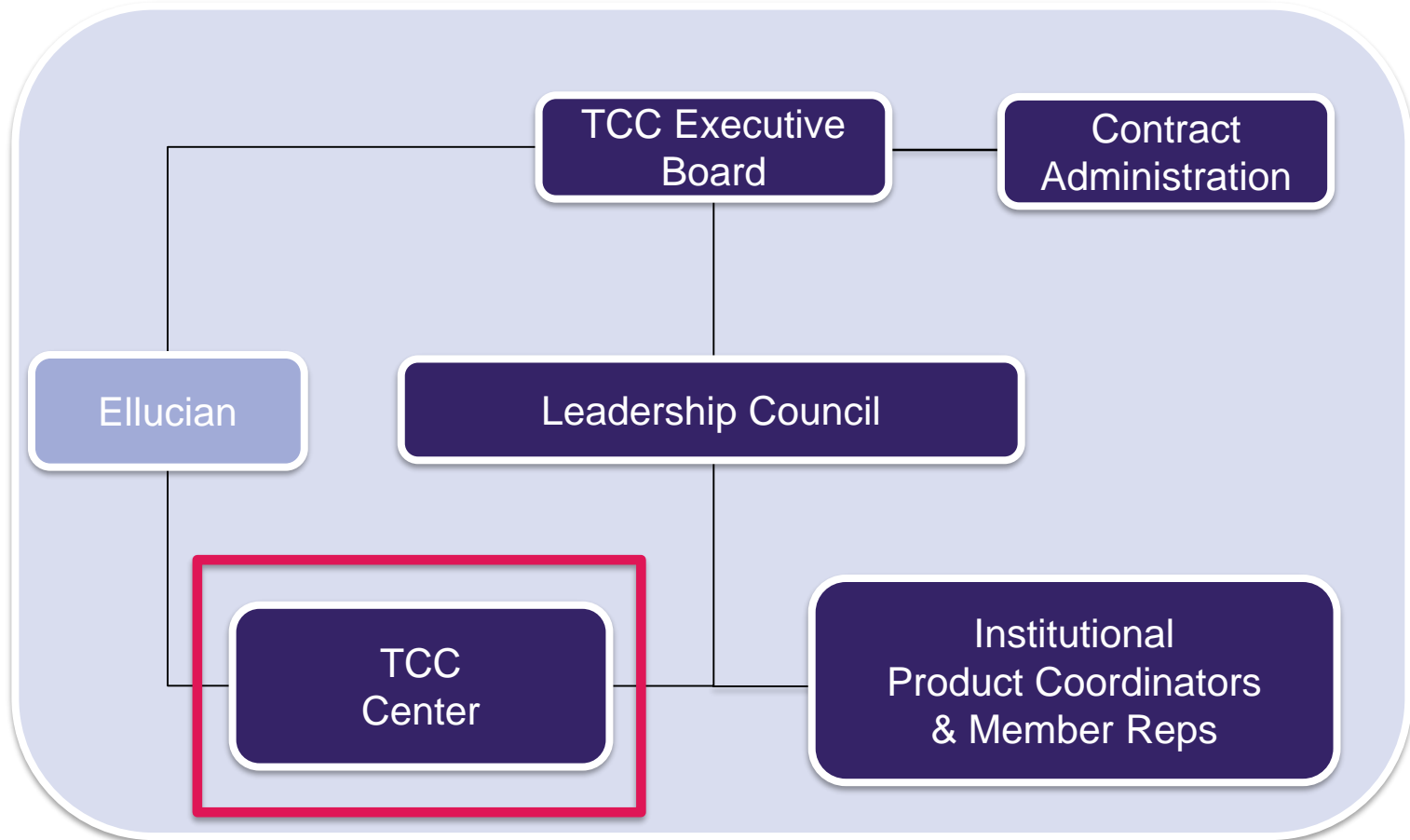


Julian Hooker  
Secretary  
Texas Tech University



Gail Wallin  
Past Chair  
Texas A&M University – Central Texas

# The Organization – TCC Center



# The Organization – TCC Center

## Ellucian TCC Center

- Ellucian Resources that Provide Texas Specific Modifications for Banner.
- Develops state and federal regulatory reports for TCC Members as appropriate
- Modifies Ellucian Proprietary Software to help TCC Members to comply with Reporting requirements of the Texas Higher Education Coordinating Board
- Maintains and updates Texas specific software for Banner that enhances the Baseline product for new software releases or changes in requirements.



# The Organization – TCC Center

## Ellucian Employees dedicated to the TCC



**David Gascich**  
Manager, Software  
Engineering  
Responsible for  
Oversight of TCC Center



**Dennis Barnes**  
Senior Business  
Analyst  
Responsible for  
Student Member  
Representatives



**Cindy Franklin**  
Senior Project  
Manager  
Responsible for Financial  
Aid Member Reps



**Stacey Jett**  
Principle  
Business Analyst  
Responsible for HR  
and Finance Member  
Representatives



# The Organization – TCC Center

## Ellucian Employees dedicated to the TCC



Corbin Lenning  
Software Engineer II



Duane Rosengartner  
Principle Software Engineer



Kristen Augustson  
Lead Software Engineer



Dean Meredith  
Senior Software Engineer

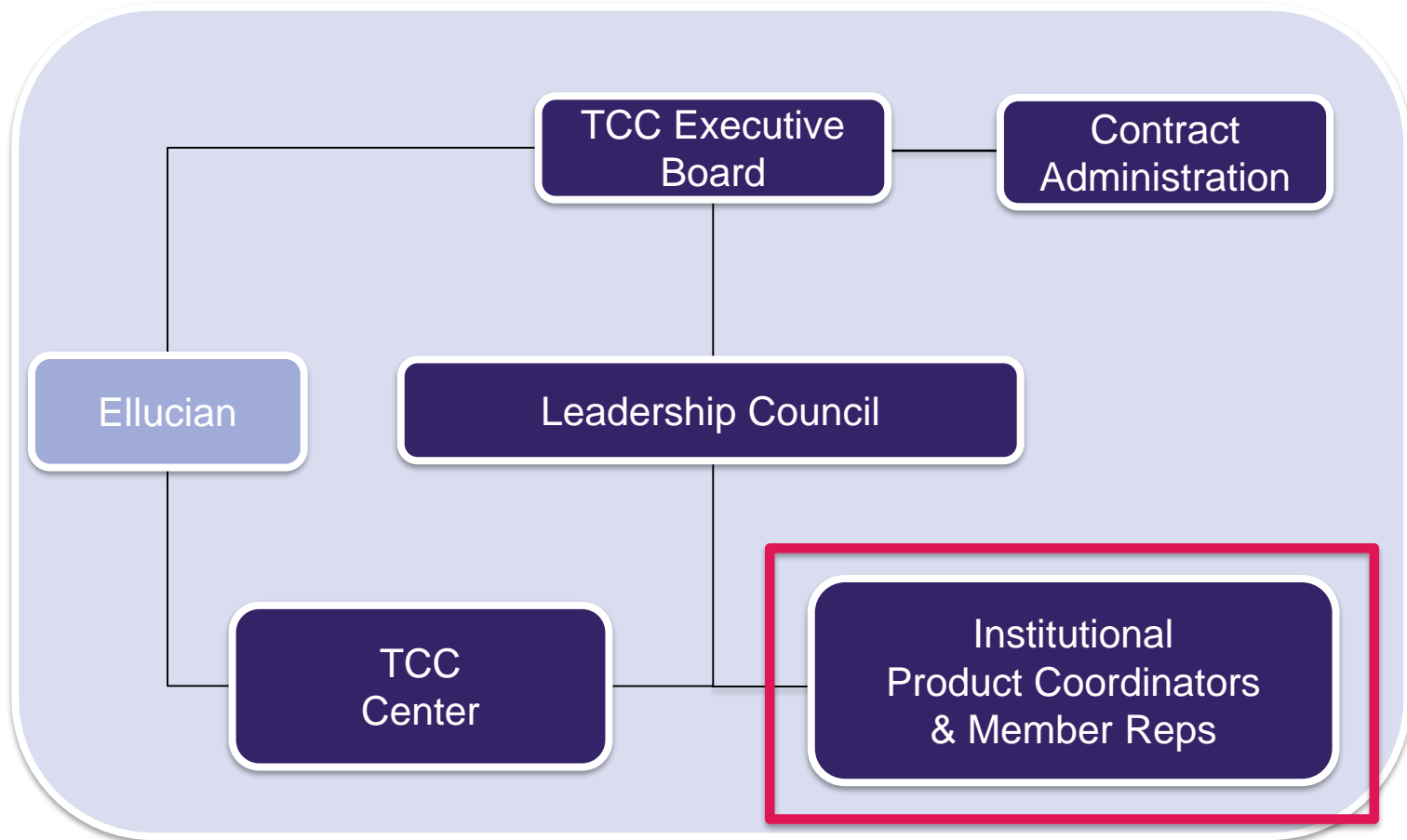


Seethal Sachidanandan  
Senior Software Engineer

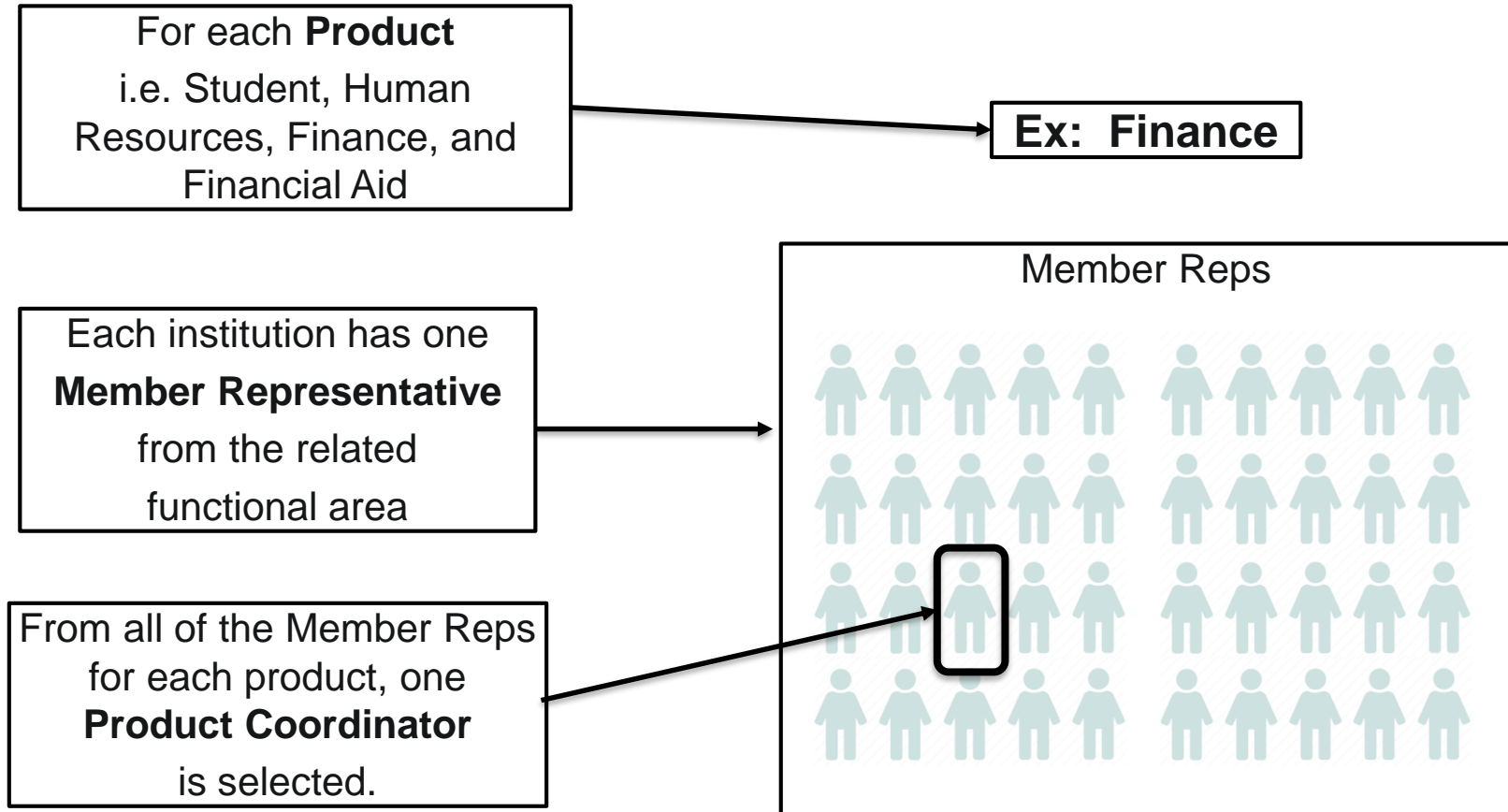


Rakshith Kadol  
Senior QA Analyst

# TCC Organization – Institutional Representation



# TCC Organization – Institutional Representation



## The Product Coordinator's Responsibilities

- Critical user representative who plays a significant role in ensuring that functional specifications get defined, reviewed, and approved by and for the consortium members.
- Leads and works with their respective Member Representatives from their specific area (i.e. Finance, Financial Aid, HR, or Student) to gain consensus on how proposed enhancements will be developed for the state of Texas.
- The Product Coordinator holds regular meetings with Member Representatives and functional users from member institutions to discuss current projects and future needs.

# TCC Organization – Institutional Representation

## Who are the current Product Coordinators?

### Human Resources



Tina Rodriguez  
Texas Tech HSC

### Finance



Carole Wardroup  
Texas Tech Health  
Science Center

### Student – 2 year



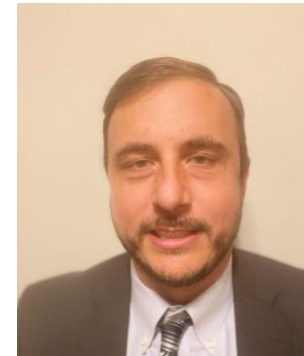
Cyndi Klausmeyer  
Blinn College

### Financial Aid



Sylvia Kraeft  
Texas A&M University

### Student – 4 year



Nick Cioci  
Lamar University

## The Member Rep's Responsibilities

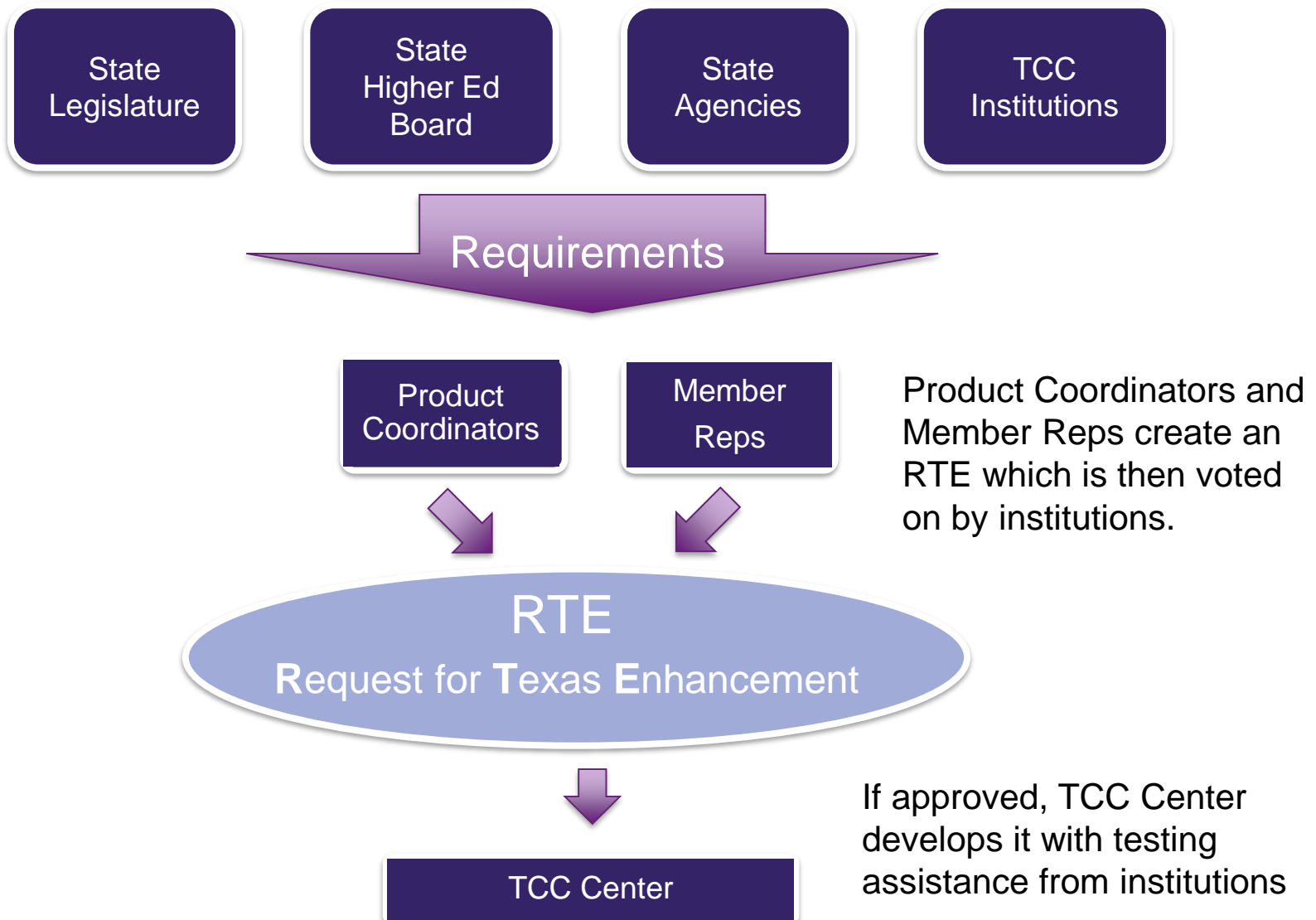
- Serve as the primary point of contact for Ellucian and the TCC Center for the related product area for their institution.
- Actively participate in TCC surveys or questions for their institution regarding TCC or the TCC Center
- Ensures any related product issues are reported to the TCC Center and actively follow-up on resolution.
- Actively participate in meetings lead by their Product Coordinator





# The TCC Operations

# TCC Operations -- How is TCC Work Initiated?





# TCC Enhancement Examples from Past Year

## Accounts Receivable

- Self-Service Banner 8 to Banner 9
- AR 8.5.3.4 Defect corrections

## Finance

- Beta USAS Additional Costs Not include on Page
- Update FAAINVE for Inv\_code Entry

## Financial Aid

- JAVA 8 Upgrade for RZPROLF
- Defect Correction

## Student

- TSIA2 Phase 3
- Streamlined Reporting

## Human Resources

- Worked/Paid Updates
- Defect Corrections



# Current and Future Activities

# Current and Future Activities

- **TCC Contract Renewal**
  - Implemented through 2027
- **Enhance Collaboration and Communication**
  - Continue to Mature the Organization Structure to Enhance Collaboration.
  - Formalize Communication Between the Leadership Council and the Product Coordinators/Member Representatives.
  - Foster Collaboration with Private Institutions
- **Define and Enhance Process Improvement Opportunities**
  - More Efficient Ways to Onboard New TCC Members.
  - Complete TCC Operational Handbook
  - Establishing a Robust Customer Satisfaction Feedback Loop.
- **Develop A Pathway for Cloud Adoption for TCC Institutions**



How Do I Stay Informed  
and Get Involved?



# How Do I Stay Informed?

**Visit the TCC Website** <https://texas-connection.org>

- Has General Information including Member Universities, Board Members and Leadership Council Members.

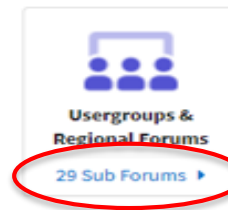
## **Use Ellucian Communities and the Texas Connection forum**

- Communities is a web-based community specifically designed to provide collaboration capabilities between Ellucian and our customers.
- Communities allows members to easily and securely collaborate, share ideas, and communicate with each other anywhere and anytime.
- Communities is the primary mechanism in which to interact with TCC member institutions and is where TCC Center posts all software release announcements.

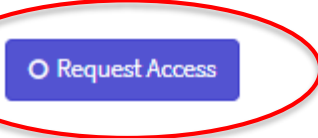
# Texas Connection Forum in Communities

## Join the Texas Connection forum in Ellucian Communities

- Sign in to Customer Center on the Ellucian.com website
- Select Community from Resources
- Navigate to 'Browse Forums'
- Find Usergroups & Regional Forums and select Sub Forums
- Then Request Access to:



Texas Connection - Private  
Membership forum for Texas Connection - Private  
175 Subscribers • Private


A blue rectangular button with the text 'Request Access' and a small circular icon to the left. A red circle highlights the button.

Request Access

- Tip: 'Digest Mode' sends you daily updates of your selected channels.

# Texas Connection Forum in Communities

## Example of available information




Search....

Community ▾

EB

Browse Forums +

All Forums / Usergroups & Regional Forums / Texas Connection - Private

 Forum

**Texas Connection - Private**


Membership forum for Texas Connection - Private

Subscribed

...

EB Have a question? Click here to start typing.

Featured Content

 From Ellucian: Banner Administrative Human Resources 9.3.21.1 patch release is available - ALL Banner HR Clients MUST INSTALL

Posted in Banner Human Resources

Content List


Content Type

All Content ▾

Sort by

Recent ▾


Question State | All Solved Unsolved Unreplied

 eTASFA Update

Texas Connection - Private

by Cindy Franklin • updated 21h ago


7 comments • 80 views

 SZPTSPU not updating SZATXI

Texas Connection - Private

by Tricia Lance • updated 3d ago

3 replies • 15 views

 TCC Documentation - how to

Texas Connection - Private

Post Content

Question

Blog

Video

Document

Event

Topics

TCC Accounts Receivable Releases

TCC Finance Releases

TCC Financial Aid Releases

TCC General Releases


TCC Human Resources Releases

TCC Student Releases


Leaderboard

Texas Connection - Private

1

 CF

Cindy Franklin  
1,455 Points



Dennis Barnes

31

# What Can You Do?

- **Get Involved**
  - If you are functional, get involved in the RTE processes for your area.
  - Collaborate with your peers at other institutions.
  - Use communities to know what is going on.
- **Get to know your local Leadership Council Member or Member Representative**
- **We need your help to provide feedback on:**
  - What is working well.
  - What needs improvement.



## Open Discussion